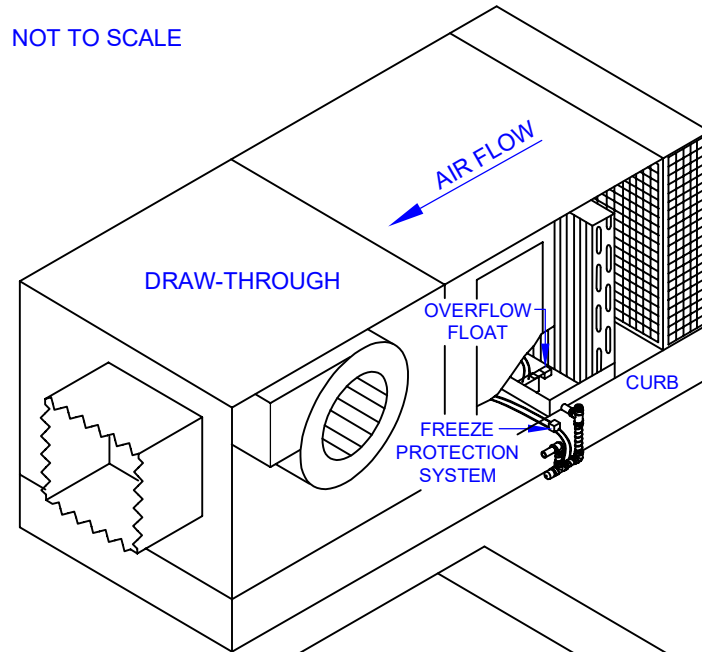
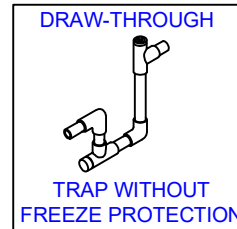


# POSSIBLE INSTALLATION ARRANGEMENTS FOR ACCEPTABLE CONDENSATE TRAPS

NOT TO SCALE

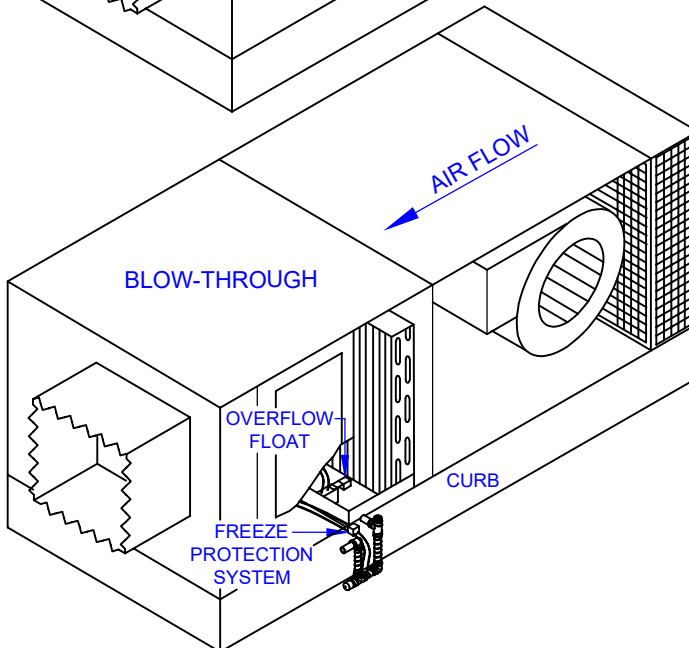
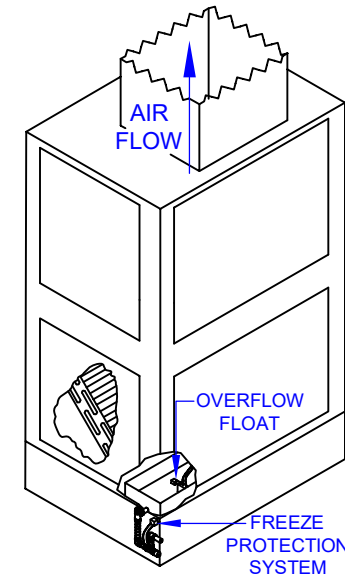


## DRAW-THROUGH

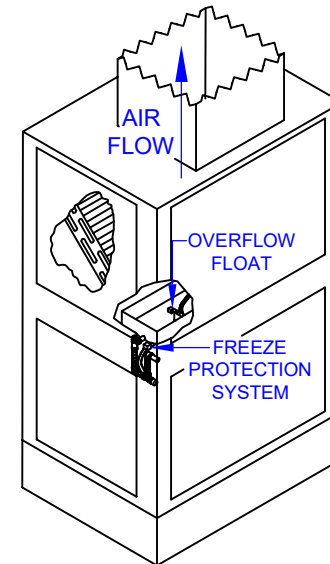
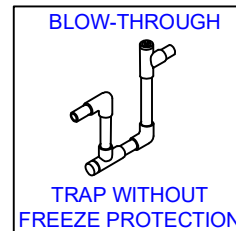


### ACCEPTABLE TRAP DRAIN SYSTEM

- Geometry matched pan pressure
- Priming provisions
- Cleanout provisions
- Pan overflow protection
- Trap freeze protection (where needed)



## BLOW-THROUGH



### NOTES:

1. INSTALL PIPE SUPPORTS AS NECESSARY TO ENSURE PIPING INTEGRITY.
2. ROUTE ALL PIPING TO AVOID ACCESS PANELS.
3. ALLOW 1/8" / FT. SLOPE BETWEEN THE CONDENSATE TRAP AND FLOOR DRAIN.
4. ONCE THE COMPONENTS ARE ASSEMBLED, EACH CONNECTING JOINT MUST BE BONDED WITH PVC CEMENT.

DESCRIPTION:

### CONDENSATE TRAPS

SCALE:  
NONE

DOCUMENT NAME:  
ACT

DATE:  
12/30/19

UNLESS OTHERWISE SPECIFIED  
DIMENSIONS ARE IN INCHES

SHEET:  
1 OF 1

CONFIDENTIAL PROPERTY OF  
*Trent Technologies, Inc.*  
15939 OLD JACKSONVILLE HWY., TYLER, TX 75703  
NOT TO BE DISCLOSED TO OTHERS, COPIED, OR  
USED FOR ANY REASON EXCEPT AS AUTHORIZED.